

Expect more of
your CAD/CAM solution.

SAFER
MORE FLEXIBLE
MORE PRECISE
EASIER



KaVo. Dental Excellence.

KaVo ARCTICA® CAD/CAM System – one system, multiple advantages.

The KaVo ARCTICA CAD/CAM system is the optimum solution for you and your practice in 4 ways:



SAFER

Thanks to its large range of possible uses, the KaVo ARCTICA CAD/CAM system offers you the greatest possible investment and future security:

- Highest investment protection – with the broad indication and material versatility, you are already prepared for future challenges today.
- Smooth processes through optimally matched system components that make your entire work process simpler.
- Higher future security through spare parts availability over the long term and reliable service.

MORE FLEXIBLE

The KaVo ARCTICA CAD/CAM system is outstandingly flexible, with maximum integration options:

- All individual components of the KAVO CAD/CAM portfolio are perfectly matched and can be individually combined with each other depending on requirements and demand.
- System components from external suppliers, e.g. marketable scanners that create open STL files, can be integrated without any problems.
- Two machine variants – you can choose whether to rely on the high-quality KaVo ARCTICA Elements with the closed variant or to use materials from any manufacturers using the open KaVo ARCTICA Engine variant.

MORE PRECISE

KaVo Dental Excellence – this means more than 100 years of experience in dentistry and more than 10 years of competence in professional CAD/CAM system solutions.

- Solid and compact design with both innovative and established materials, as well as field-tested system components.
- Simultaneous 5-axis milling system for perfect results.
- Durable and highly precise grinding and milling tools.

EASIER

All system components can be operated easily and intuitively:

- In only 5 steps with the KaVo ARCTICA Engine for a complete restoration.
- Optimum setting of the scanning angle thanks to live image display.
- Simple definition of the user interface and the restoration per jaw.
- Simple maintenance – intelligent detail solutions allow individual system components such as the electronics box, the filter system or the spindle to be replaced quickly and easily.

The KaVo ARCTICA CAD/CAM workflow:

Intra oral scanner

Desktop scanner,
e.g. KaVo ARCTICA
Scan



Scanner

KaVo multiCAD

KaVo ARCTICA Elements

KaVo ARCTICA Engine

The result: precisely manufactured restorations

KaVo ARCTICA® CAD/CAM System – that pays off for you every day.

You can reliably count on it.

When does the KaVo ARCTICA CAD/CAM-System pay off?
When does the KaVo ARCTICA Engine pay off?

For your investment decision, a sustainably predictable cost-effectiveness is of the utmost importance.

All factors such as material, manufacturing and tooling costs, but likewise personnel, financing and leasing expenses play important roles in this context.

Find out how you too can benefit from the new KaVo ARCTICA CAD/CAM system, and use our profitability computer under www.kavo.com/profit.

Rely on the economical CAD/CAM solution.

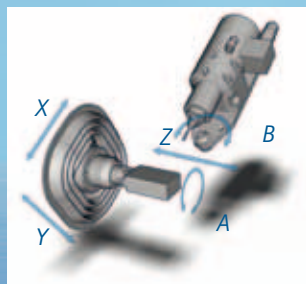
- **Flat learning curve** – no complicated familiarization – start and get on quite simply and smoothly.
- **Efficient** – in only 5 steps, precisely made restorations can be milled with the KaVo ARCTICA Engine.
- **Versatile** – benefit from a wide range of indications thanks to the combination of wet milling and wet grinding.
- **Future security** – with the KaVo ARCTICA CAD/CAM system you are prepared for processing future materials already today.
- **Save investment costs** – spare yourself a new scanner and just use your existing intraoral scanner if it is capable of creating open STL data.
- **Save servicing costs** – just exchange yourself individual components such as the cooling lubricant container and pump, the electronics box and the spindle.
- **Effective** – optimise your workload with the KaVo Everest Portal, the interactive "exchange platform" for 3-D design data for several scanning and milling partners.

The genuine alternative for your practice and your laboratory.

KaVo ARCTICA Engine

Safety, precision and versatility – for optimum results.

- Highest precision: simultaneous 5-axis system for processing demanding geometries and undercuts.
- Easy handling: The intuitive operating concept enables the complete restoration in only 5 steps.
- Maximum investment protection: With wet milling and wet grinding, a large variety of materials can be processed.
- Excellent flexibility: Thanks to open interfaces to commercial intraoral and desktop scanners.



Precise: the milling motions along the five axes, X, Y, Z, A and B allow exact work in critical areas and even in areas with undercuts.



Select from 2 variants:

1. The closed machine variant.

- Only trust quality and use the high-quality KaVo ARCTICA Elements.
- Benefit from an efficient materials and tools management as well as a time-saving loading, thanks to RFID scan.
- Use the extensive KaVo Service and Support.

2. The open machine variant.

- This also provides for material processing with materials from external suppliers.
- Just insert the opening dongle, which is subject to a charge, and the software is installed automatically.
- Maintain maximum flexibility and remain open for the future.

KaVo ARCTICA Elements

Comprehensive material spectrum for a large number of indications.

- High future security thanks to a 6-year warranty and cooperation with respected material manufacturers.
- Large variety thanks to a comprehensive range of materials for a large number of indication options – VITABLOCS can also be processed.
- Outstanding quality and environmentally friendly manufacture according to biological criteria.

VITA



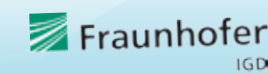
Quickly recorded, quickly designed – quite simply.

KaVo multiCAD Software

Step by step – quite simply and safely.

- Both for beginners and advanced users this is the perfect CAD software package, no retraining required.
- Intuitive and user-friendly menu navigation.
- Simple construction of designs thanks to a step-by-step wizard with predefined parameter and design proposals.
- Versatile because compatible with STL data of commercial, open scanners.

Developed in cooperation with Fraunhofer IGD



With the intuitive user interface, you always have the complete view – everything is self-explanatory.



Desktop or intraoral scanner

KaVo ARCTICA Scan.

- Fascinatingly fast – place object, set scanning angle, start scan, finished.
- Extremely precise even with complex geometries thanks to striped light projection.
- Outstandingly flexible by creating open STL data
- Flat learning curve – no special preparation technique required.



KaVo ARCTICA Scan

Intraoral scanner.

The KaVo ARCTICA CAD/CAM system is flexible – instead of KaVo ARCTICA Scan you can also use intraoral scanners that create open STL data.



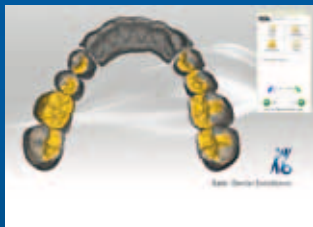
KaVo ARCTICA® CAD/CAM System – one system, multiple advantages.

Use the KaVo ARCTICA CAD/CAM system and benefit from its numerous advantages, such as its wide range of applications, a large variety of materials, outstanding flexibility, as well as the most precision, coupled with easy handling. Ultimately maximising your investment and future stability.



KaVo ARCTICA Scan

- ✳ Convincingly simple and fast, thanks to manual setting of the scanning angle and live image display.
- ✳ Outstanding flexibility, as open STL data is created, which can be loaded into commercial open dental CAD software packages.
- ✳ Impressively precise, even with complex geometries, thanks to striped light projection.



KaVo multiCAD

- ✳ Intuitive, user-friendly screen design and step-by-step wizard, for easy and safe design.
- ✳ Versatile because it is completely compatible with STL data of commercial, open scanners.
- ✳ Very fast thanks to maximum use of the predefined computer performance.



KaVo ARCTICA Elements

- ✳ Large variety thanks to a comprehensive range of materials for a larger number of indication options.
- ✳ Higher future security thanks to long-term warranties and cooperation with respected material manufacturers.
- ✳ Outstanding quality and environmentally-friendly manufacture according to biological criteria.



KaVo ARCTICA Engine

- ✳ Highest precision and easy handling for perfect results, usually without post-processing.
- ✳ Excellent flexibility through complete compatibility with commercial scanners.
- ✳ Maximum investment protection and future security due to a wide range of applications, with extensive indication and material options.

We are also available to contact online.

Learn more about service and support on our website, at
www.kavo.com/arctica, or send an e-mail to service.arctica@kavo.com



KaVo. Dental Excellence.